



—

GROUNDBREAKING BOOSTED WEAR PERFORMANCE BEST-IN-CLASS WET GRIP



DURAVIS
R002



BRIDGESTONE
Solutions for your journey

Bridgestone Europe

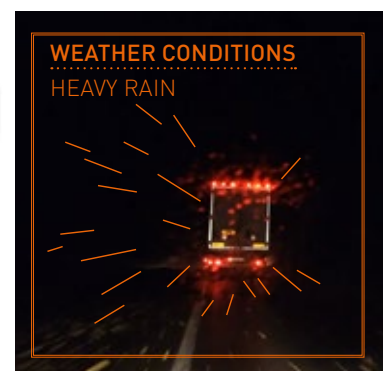
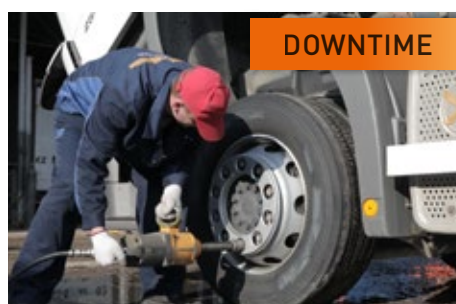
For your nearest Bridgestone Authorised Dealer,
visit our website www.bridgestone.eu



Some of today's major transport challenges

Today, increasing demands on the transportation industry mean fleet owners and managers need to maximise their productivity and minimise operational costs.

Bridgestone's DURAVIS R002 is the best solution to help fleets lower their operational costs by significantly reducing the cost per kilometre through outstanding wear performance and optimised fuel efficiency.



NEW GROUNDBREAKING DURAVIS R002



BOOSTED WEAR PERFORMANCE
45% MORE MILEAGE COMPARED TO ITS PREDECESSOR¹⁾



MINIMISED COST PER KILOMETER
15% REDUCTION IN COST PER KILOMETRE COMPARED TO ITS PREDECESSOR¹⁾



BEST-IN-CLASS FOR WET GRIP
THE FIRST TYRE FOR REGIONAL APPLICATION TO RECEIVE AN EU LABEL GRADE "A" IN STEER (SIZE: 315/80R22.5)



OPTIMISED FUEL EFFICIENCY
FEATURES B-C-B COMBINATION IN STEER, DRIVE AND TRAILER²⁾



WINTER READY
3PMSF AND M+S



RFID
EQUIPPED WITH UNIQUE RFID TECHNOLOGY TO IDENTIFY THE TYRES

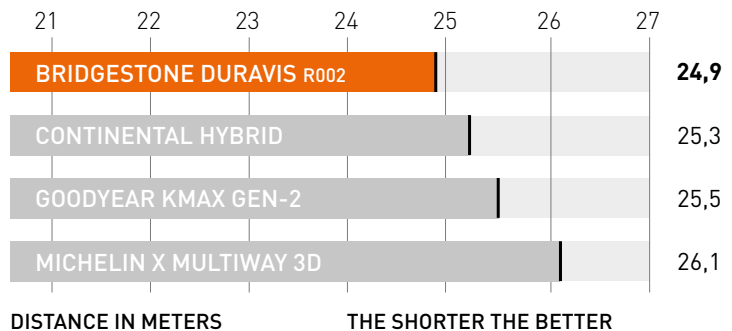
AHEAD OF COMPETITION



Wet Braking

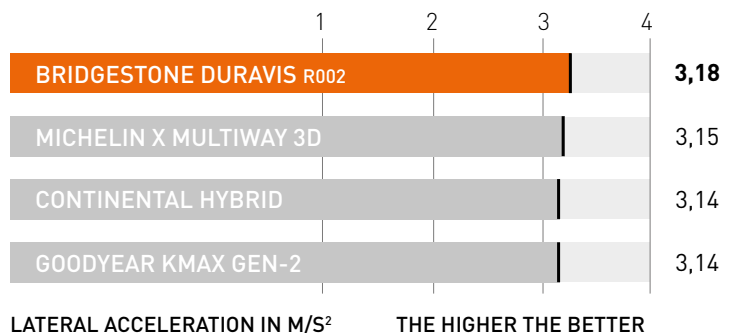
WET BRAKING DISTANCE (M) 60 to 0 km/h

- ✓ **SHORTEST BRAKING DISTANCE**
- ✓ **BEST WET GRIP**



Lateral Wet Grip

LATERAL ACCELERATION ON WET CIRCLE (R = 42 m, RANKED) [m/s²]



1) Based on current wear performance internal test results vs predecessors R-STEER 001, R-DRIVE 001 and R168. Sizes 315/80R22.5 for STEER and DRIVE and 385/65R22.5 for TRAILER.
 2) EU Label in sizes 315/80R22.5 STEER & DRIVE and 385/65R22.5 in TRAILER.
 3) Tests carried out by TÜV SÜD on the request of Bridgestone in November 2019 at the facilities EUPG, Aprilia (Italy) for wet tests, on MAN TGX 26.500, on tyre size 315/80 R 22.5. Bridgestone DURAVIS R-STEER 002 / R-DRIVE 002 compared to the performances of main competitors in the same segment: Michelin X Multiway 3D XZE / X Multiway 3D XDE, Continental Hybrid HS3 / Hybrid HD3, Goodyear Kmax S Gen.2 / Kmax D Gen.2. Annex Report No. [713168488] Wet braking distance [60 km/h to 0 km/h] in meters: Bridgestone DURAVIS R002 [24.9], Continental Hybrid [25.3], Goodyear K-max Gen-2 [25.5], Michelin X Multiway 3D [26.1] Lateral wet grip stability [cornering] in meter/second 2: Bridgestone DURAVIS R002 [3.18], Continental Hybrid [3.14], Goodyear K-max Gen-2 [3.14], Michelin X Multiway 3D [3.15].



ALREADY PROVEN IN THE MARKET

ALREADY PROVEN WITH OVER
**13 FLEETS, 151 VEHICLES AND
OVER 12,322,853 KILOMETRES** ¹⁾



“The drivers are delighted with the product, which is the most important thing. A happy driver makes a happy fleet; They commented on improved wet grip, and they drive with greater confidence as a result.”

Rhys Thomas,
Owen’s Road Services, UK

“We have improved comfort and road-holding from all Bridgestone products across the board, combined with excellent end mileage.”

Gordon Daly,
Loane Transport, Ireland



€ 112 082/yr savings
on cost per km and
€ 554 459/yr savings
on fuel costs for an
average regional fleet. ²⁾



9.17 % better wet
grip index on steer
compared with
previous generation. ³⁾



2.3 l/100km
savings per truck ²⁾
for an average
regional fleet.



1 119 tonnes/yr
reduced CO₂ emissions
for a better
carbon footprint. ⁴⁾

¹⁾ Based on internal field evaluation. Status May 2019.

²⁾ Fuel: Based on calculations with the VECTO tool / CPK: Based on internal field test and average market price. For a 4x2 tractor and trailer combination with DURAVIS R002 315/80R22.5 steer and drive, and 385/65R22.5 trailer tyres compared with the same unit fitted and under same conditions with previous generation R-STEER 001, R-DRIVE 001, and R168 tyres, for an entire fleet based on the following assumptions: fleet size of 150 tractors and trailers, 130,000 km annual mileage per truck, diesel price € 1.2/l. Please note that actual savings may vary as they depend heavily on other factors.

³⁾ Based on values from previous generation R-STEER 001 in comparison with DURAVIS R-STEER 002, in size 315/80R22.5.

⁴⁾ CO₂ reduction projected for an entire fleet based on the following assumptions: fleet size of 150 tractors and trailers, 130,000 km annual mileage per truck, diesel price € 1.2/l.

TESTIMONIALS

“My company carries out transports that put tyres really under stress. For this reason I prefer to use only premium tyres. We appreciate a lot Bridgestone DURAVIS R002 tyres because they showed a very regular wear, a longer life compared to products that are on the market today and, in general, excellent performance both on dry and wet.”

Narcisio Romele, ROTRANS S.R.L., Romania



“Our drivers are very satisfied with the good wet grip, especially when accelerating out of the round about where the previously used tyre brand could not build up sufficient traction in unloaded condition. Even on snowy roads there were no problems thanks to the reliable grip. Increased safety for our drivers!”

August Gschwander, August Gschwander Transport GmbH, Germany



“Thanks to the DURAVIS proposal made by Bridgestone consultants, we have managed to increase the mileage performance while we were surprised by the excellent wet behavior. We are very satisfied with the results obtained since we have reduced our operating cost.”

Javier Gandul Sanz, Transportes Candispe, Spain



“Bridgestone DURAVIS R002 has demonstrated excellent wet braking ability and high mileage performance, meeting our expectations. We are pleased to use this new Bridgestone product in our fleet.”

António Gumerzindo, Transportes Central Pombalense, Portugal



“Our vehicles travel daily in topographically demanding roads and terrain, which includes slopes and curvy sections. Since the silo vehicles continuously operate under changing load conditions, we require a high level of directional stability under varying road conditions, especially on wet. Our drivers were really surprised of DURAVIS products good wet performance and the grip on snowy roads.”

Fritz Toifl, Fritz Toifl GmbH, Austria



SUPPORTING TECHNOLOGIES



BOOSTED WEAR PERFORMANCE

LOW DEFORMATION PATTERN DESIGNS

- » STEER: tight pattern and 3D sipes for high cornering power
- » DRIVE: low energy pattern keeping deformation under control, enhancing tyre life and even wear
- » TRAILER: close pattern

HIGH-PERFORMANCE COMPOUNDS

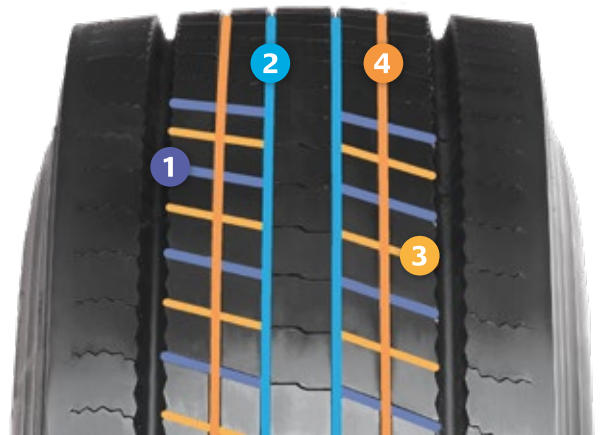
- » STEER and DRIVE: Hi-Silica cap compound and new tandem mixing technology



BEST-IN-CLASS WET GRIP

ENHANCED WATER EJECTION BY PATTERN DESIGN featuring

- » Multiple drainage features such as channels, sipes and lugs
- » Optimized contact pressure



- 1 Optimized shape lugs
- 2 Y-shapes grooves
- 3 3D sipes
- 4 Water drainage channels



OPTIMISED FUEL EFFICIENCY

LOW DEFORMATION PATTERN DESIGNS

- » High compression stiffness for reduced rolling resistance

HIGH PERFORMING CAP AND CARCASS COMPOUNDS

- » Low energy loss



DEFORMATION ENERGY



"The smaller deformation, the smaller energy loss"

PRODUCT LINE-UP

STEER



Size	Load index	Speed symbol	Section Width (mm)	Diameter (mm) Overall	Static Loaded Radius (mm)	Rolling Circ. (mm) @ 90 km/h (Tot, ± 2%)	Rim (Inch) Measuring	Rim (Inch) Optional				dB	M+S		
DURAVIS R-STEER 002															
295/80 R 22.5	154/149	M	305	1051	490	3195	9.00	8.25	B	B	A	70	✓	✓	✓
315/80 R 22.5	156/150	L	314	1077	500	3272	9.00	9.75	B	A	A	71	✓	✓	✓
	154/150	M													
315/70 R 22.5	156/150	L	313	1017	469	3091	9.00	9.75	B	B	A	71	✓	✓	✓
	154/150	M													
385/65 R 22.5	160	K	376	1076	497	3269	11.75	12.25	B	B	A	69	✓	✓	✓
	158	L													
315/60 R 22.5	154/148	L	322	957	448	2910	9.75	9.00	C	B	A	70	✓	✓	✓
385/55 R 22.5	160	K	381	1001	466	3041	12.25	11.75	B	B	B	72	✓	✓	✓
	158	L													
DURAVIS R-STEER 002 EVO															
385/65 R 22.5	164	K	381	1076	498	3271	11.75	12.25	B	B	A	71	✓	✓	✓
	158	L													

DRIVE



Size	Load index	Speed symbol	Section Width (mm)	Diameter (mm) Overall	Static Loaded Radius (mm)	Rolling Circ. (mm) @ 90 km/h (Tot, ± 2%)	Rim (Inch) Measuring	Rim (Inch) Optional				dB	M+S		
DURAVIS R-DRIVE 002															
295/80 R 22.5	152/148	M	305	1059	493	3219	9.00	8.25	C	B	B	75	✓	✓	✓
315/80 R 22.5	156/150	L	314	1085	504	3298	9.00	9.75	C	B	B	75	✓	✓	✓
	154/150	M													
305/70 R 22.5	150	M	306	1007	465	3062	9.00	8.25	Available soon			✓	✓	✓	
315/70 R 22.5	154/150	L	314	1030	475	3131	9.00	9.75	C	B	B	75	✓	✓	✓
	152/148	M													
295/60 R 22.5	150/147	L	299	928	435	2820	9.75	9.00	C	B	B	76	✓	✓	✓
315/60 R 22.5	152/148	L	319	960	449	2918	9.75	9.00	C	B	B	74	✓	✓	✓

TRAILER



Size	Load index	Speed symbol	Section Width (mm)	Diameter (mm) Overall	Static Loaded Radius (mm)	Rolling Circ. (mm) @ 90 km/h (Tot, ± 2%)	Rim (Inch) Measuring	Rim (Inch) Optional				dB	M+S		
DURAVIS R-TRAILER 002															
385/65 R 22.5	160	K	380	1086	502	3300	11.75	12.25	B	B	A	70	✓	✓	✓
	158	L													
385/55 R 22.5	160	K	389	1005	468	3055	12.25	11.75	B	B	A	70	✓	✓	✓
	158	L													
DURAVIS R-TRAILER 002 EVO															
385/65 R 22.5	164	K	381	1081	500	3285	11.75	12.25	B	B	A	70	✓	✓	✓
	158	L													

ADDITIONAL BRIDGESTONE SOLUTIONS

Optimise your tyre management and fleet operations

EXTEND YOUR TYRES' LIFE WITH BANDAG RETREADS

Offering outstanding mileage, durability and safety, the Bandag R-DRIVE 002 and R-TRAILER 002 are the perfect treads to **extend the life** of Bridgestone DURAVIS R002 tyres.



1) Based on internal field test and average market price for a 4x2 tractor and trailer combination with Bandag R-DRIVE 002 315/80R22.5 on drive, and 385/65R22.5 Bandag R-TRAILER 002 trailer tyres compared with the same unit fitted and under same conditions with previous generation R-DRIVE 001, and R168 tyres, for an entire fleet based on the following assumptions: fleet size of 150 tractors and trailers, 130,000 km annual mileage per truck. Please note that actual savings may vary as they depend heavily on other factors.



€ 48 171/yr
savings on cost per km
for an average regional
fleet, using retread.¹⁾

MAXIMISE FUEL SAVINGS AND REDUCE FLEET COSTS WITH THE BRIDGESTONE TYRE MONITORING SYSTEM

The annual average savings for a typical tractor-trailer combination running at the correct tyre pressure are up to € 500 in fuel consumption, € 200 in tyre costs and € 400 in breakdown costs. The cost of installing a Bridgestone tyre monitoring system is **paid back within one year!**



2) Based on internal field evaluation and tests conducted with Bridgestone's research and development facilities



Up to **€ 1 100/yr**
saving per tractor-
trailer combination
running at correct
tyre pressures.²⁾

CONTACT US FOR YOUR CUSTOMISED TOTAL TYRE CARE SOLUTION

We examine your fleet and develop the most appropriate customised total tyre care solution for your needs. Our commitment is to reduce your total tyre budget without any compromise on safety, and more...

Contact us for a first exploratory visit.

www.bridgestone.eu

BRIDGESTONE EUROPE NV/SA
Kleine Kloosterstraat 10 - 1932 Zaventem - Belgium



BRIDGESTONE
Solutions for your journey